

PHILIPS

LED Spotlight

Mod COB

Elevate your home with customized lights



Made by you. Made for you.

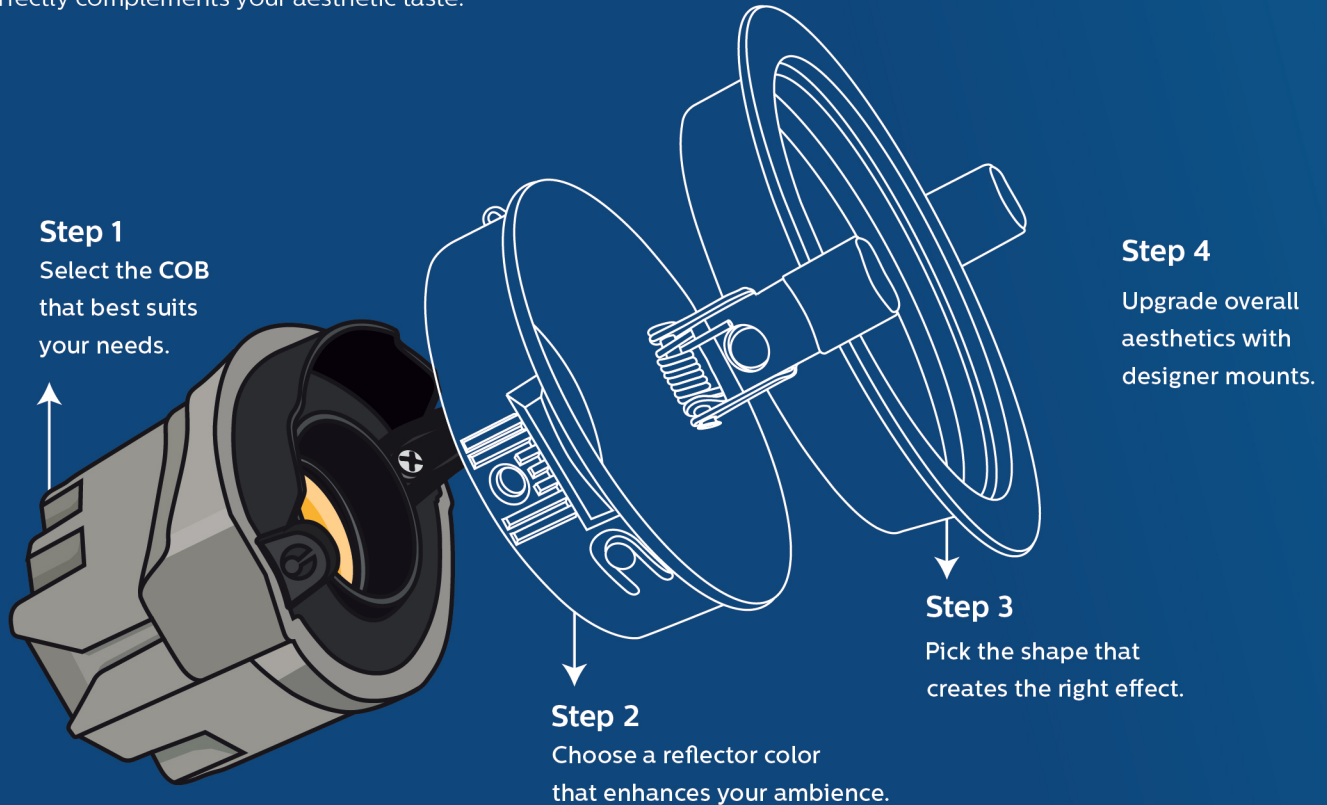
Make your luxurious living spaces come alive with the right kind of light that highlights intricate textures and also follows your mood.





Modularity at its best

Elevate your home's ambience with Philips MOD COB lighting. Countless lighting combinations give you freedom to create lighting that perfectly complements your aesthetic taste.



Light up the way you love it

Explore the endless possibilities that give your home a timeless touch.



2964 lighting combinations
Create perfect lighting for every ambience.



3 beam angles with angular tilt
Accentuate your décor's highlights with style and convenience.



CRI 90 for enhanced color clarity
Experience your surroundings in its true colors.



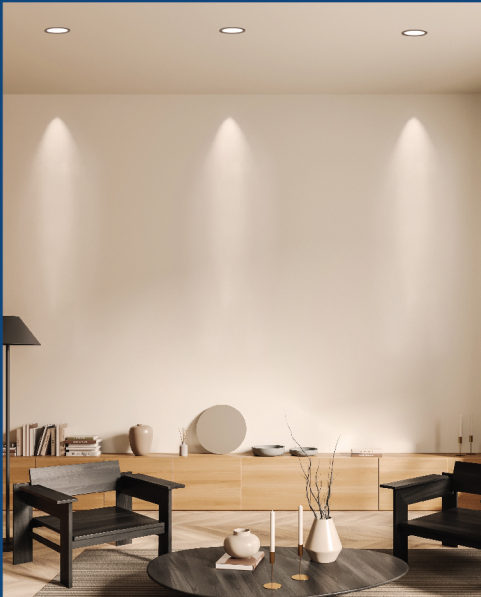
Multiple beam angles

Optics - Beam Angles

Optics in COBs are crucial elements, as they alter the directionality and intensity of light from the LED source. Different lens/ reflector type helps control the beam angle of the output light, to create either crisp-edged or diffused light, or to concentrate light in certain areas while limiting it in others.

The MOD COB is available with options of 15/ 24/ 36 degree which helps manage the light beam angle to spot/ narrow/ medium and direct the light as per your needs.

15°



24°



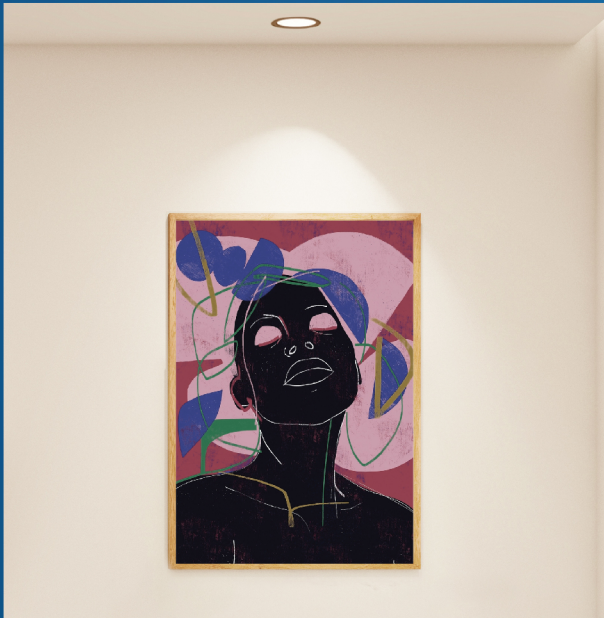
36°



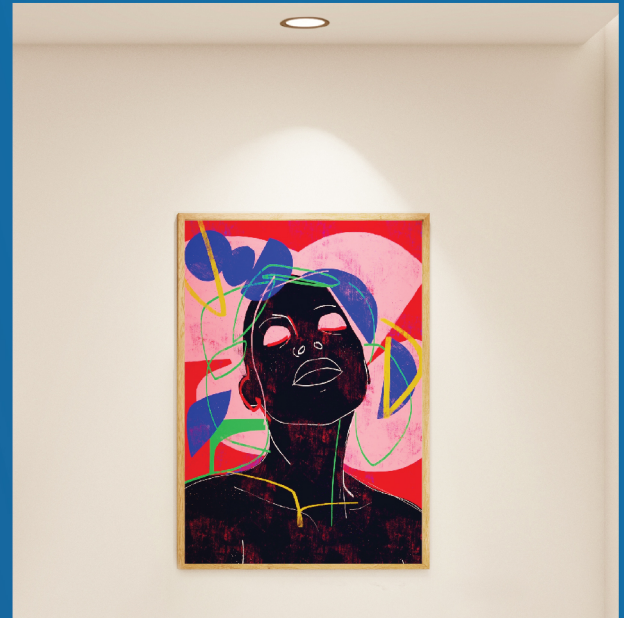
CRI 90

Color rendering index (CRI) is a quantitative measure of the ability of a light source to reveal the colors of various objects in comparison with a natural or standard light source. MOD COBs come with CRI>90 which helps in showcasing the objects in their true colors as compared to other LED products.

CRI 80



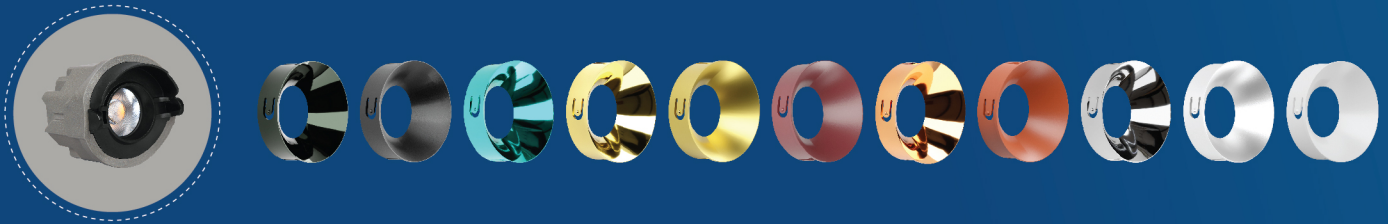
CRI 90



Attachments & accessories

Colors

Choose from 11 captivating colors.



Shapes

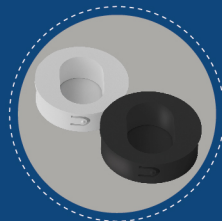
Get creative with square, circle, oval and semi-circle light shapes.



Square



Circle



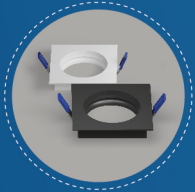
Oval



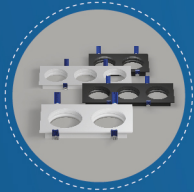
Semi circle

Mounts

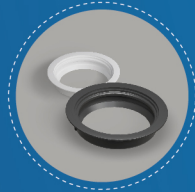
Enhance your ceiling with square, round, surface and trimless mounts.



Square



Square



Round



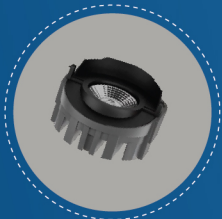
Surface



Surface

Wattages and beam angles

Find the luminance that suits your décor with 7W and 12W options.



7 W



12 W

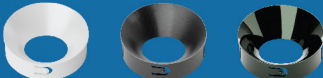

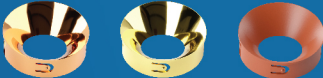



Philips MOD COB






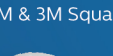





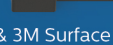



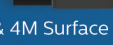

Modular lights for the modern you.



Ordering Details

12NC	SAP Description	Wattage & Lumen	Dimension	MRP
929003685101	7W MODCOB LED 15D (WW)	 <p>7W 560 Lm</p>	<p>L - 58mm</p> <p>B - 58mm</p> <p>H - 30mm</p>	2165
929003685201	7W MODCOB LED 15D (NW)			2165
929003685301	7W MODCOB LED 24D (WW)			2165
929003685401	7W MODCOB LED 24D (NW)			2165
929003685501	7W MODCOB LED 36D (WW)			2165
929003685601	7W MODCOB LED 36D (NW)			2165
929003685701	12W MODCOB LED 15D (WW)	 <p>12W 960 Lm</p>	<p>L - 61mm</p> <p>B - 58mm</p> <p>H - 50mm</p>	2595
929003685801	12W MODCOB LED 15D (NW)			2595
929003685901	12W MODCOB LED 24D (WW)			2595
929003686001	12W MODCOB LED 24D (NW)			2595
929003686101	12W MODCOB LED 36D (WW)			2595
929003686201	12W MODCOB LED 36D (NW)			2595

12NC	SAP Description	Image	Dimension	MRP
929003686301	Reflector MODCOB LED (Ebony)	 White Black Onyx	L – 68mm B – 68mm H – 22mm	310
929003686401	Reflector MODCOB LED (Onyx)			390
929003686501	Reflector MODCOB LED (White)			310
929003686601	Reflector MODCOB LED (Pearl)	 Pearl Chrome Gold		390
929003686701	Reflector MODCOB LED (Chrome)			390
929003686801	Reflector MODCOB LED (Gold)			390
929003686901	Reflector MODCOB LED (Rosette)	 Rosette Champagne Aurum		390
929003687001	Reflector MODCOB LED (Champagne)			390
929003687101	Reflector MODCOB LED (Aurum)			390
929003687201	Reflector MODCOB LED (Wine)	 Azure Wine		390
929003687701	Reflector MODCOB LED (Azure)			390
929003687801	Front Ring White MODCOB LED Round	 Round Oval		390
929003687901	Front Ring White MODCOB LED Oval			390
929003688001	Front Ring White MODCOB LED Arch		390	
929003688101	Front Ring White MODCOB LED Square		390	
929003687301	Front Ring Black MODCOB LED Round	 Square Arch	390	
929003687401	Front Ring Black MODCOB LED Oval		390	
929003687501	Front Ring Black MODCOB LED Arch		390	
929003687601	Front Ring Black MODCOB LED Square		390	

12NC	SAP Description	Image	Dimension & Cutout	MRP
29003688201	Mounting Grid MODCOB LED 1M Square Black		L-92mm; B-92mm; H-19mm Cut out-78mm x 78mm	950
929003688301	Mounting Grid MODCOB LED 2M Square Black		L-174mm; B-92mm; H-19mm Cut out-156mm X 78mm	1385
929003688401	Mounting Grid MODCOB LED 3M Square Black		L-256mm; B-92mm; H-19mm Cut out-238mm x 78mm	2075
929003688501	Mounting Grid MODCOB LED 1M Square White		L-92mm; B-92mm; H-19mm Cut out-78mm x 78mm	950
929003688601	Mounting Grid MODCOB LED 2M Square White		L-174mm; B-92mm; H-19mm Cut out-156mm X 78mm	1385
929003688701	Mounting Grid MODCOB LED 3M Square White		L-256mm; B-92mm; H-19mm Cut out-238mm x 78mm	2075
929003688801	Surface Grid MODCOB LED 1M Black		L-95mm; B-95mm; H-90mm	2250
929003688901	Surface Grid MODCOB LED 2M Black		L-176mm; B-95mm; H-90mm	3115
929003689001	Surface Grid MODCOB LED 3M Black		L-256mm; B-95mm; H-90mm	3980
929003689101	Surface Grid MODCOB LED 4M Black		L-176mm; B-176mm; H-90mm	4670
929003689201	Surface Grid MODCOB LED 1M White		L-95mm; B-95mm; H-90mm	2250
929003689301	Surface Grid MODCOB LED 2M White		L-176mm; B-95mm; H-90mm	3115
929003689401	Surface Grid MODCOB LED 3M White		L-256mm; B-95mm; H-90mm	3980
929003689501	Surface Grid MODCOB LED 4M White		L-176mm; B-176mm; H-90mm	4670
929003689601	Mounting Grid MODCOB LED 1M Round Black		L-83mm; B-83mm; H-19mm Cut out-76mm	690
929003689701	Mounting Grid MODCOB LED 1M Round White		L-83mm; B-83mm; H-19mm Cut out-76mm	690
929003689801	Mounting Grid MODCOB LED (Trimless)		L-83mm; B-83mm; H-19mm Cut out-76mm	690



